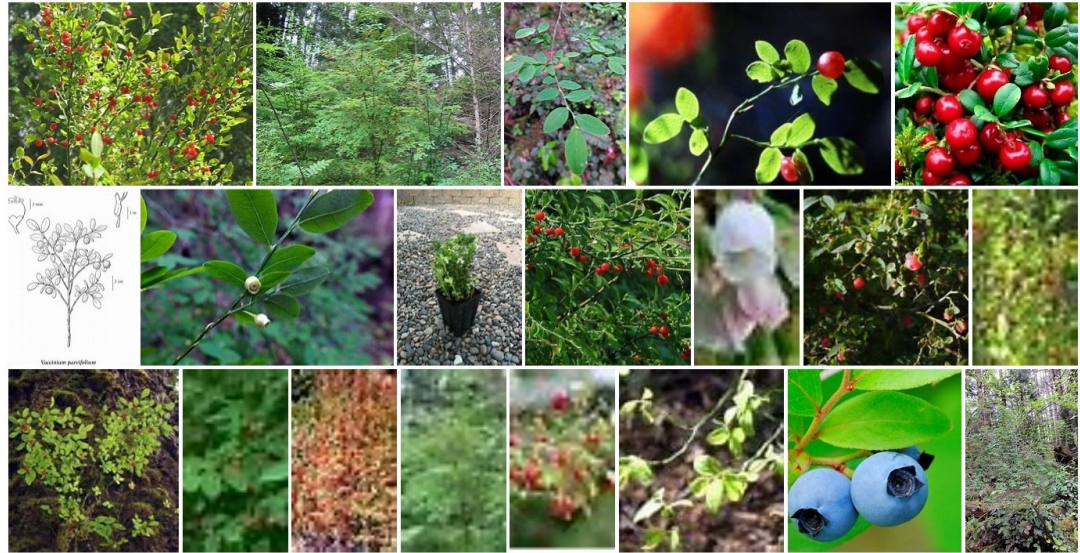


Red huckleberry*Scientific:* Vaccinium parvifolium Sm.*Primary category:* Shrub*Habitat:* Brushfields, Forests*Description (by Bosky Dell Natives):*

This erect, deciduous shrub (4-10 ft.) with lacey foliage and edible red berries is appreciated as a delectable food source by people and by wildlife.

Red huckleberry is a familiar member of the understory in coniferous forests. Plant with evergreen huckleberry for greater beauty and berry selection.

Part sun/shade, low-regular water, acidic soil with lots of rotted wood.

Images of Vaccinium parvifoliumbing.com/images[See all images >](#)*Lewis and Clark's journal entries (by Bosky Dell Natives):*