

**Pacific aster, Aster chilensis, Pacific aster**

*Scientific:* Aster chilensis

*Primary category:* Ground cover, flower

*Habitat:* Grasslands

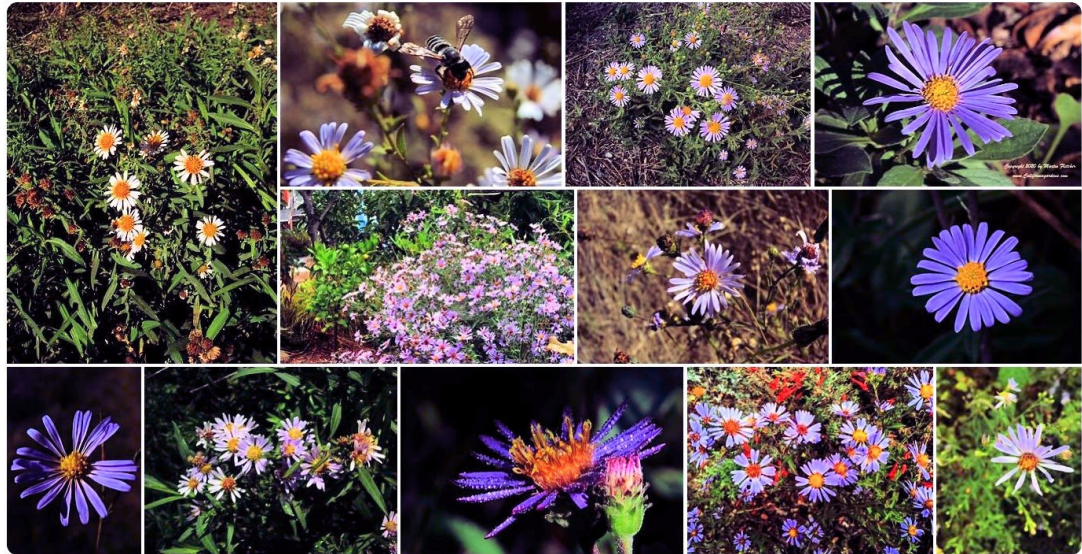
*Description (by Bosky Dell Natives):*

Slender, sprawling perennial (1.5-4 ft.) with blue, violet, or white (ray) flowers with yellow centers (disc flowers) in late summer-fall. Pacific aster will spread quickly by rhizome. Good choice for dry, sunny slopes. Flowers attract bumblebees.

Sun, low-moderate water.

## Images of Pacific Aster

bing.com/images



See all images >

*Lewis and Clark's journal entries (by Bosky Dell Natives):*

Empty space for journal entries.